

**This electronic collection of documents is provided  
for the convenience of the user  
and is Not a Certified Document –**

**The documents contained herein were originally issued  
and sealed by the individuals whose names and license  
numbers appear on each page, on the dates appearing  
with their signature on that page.**

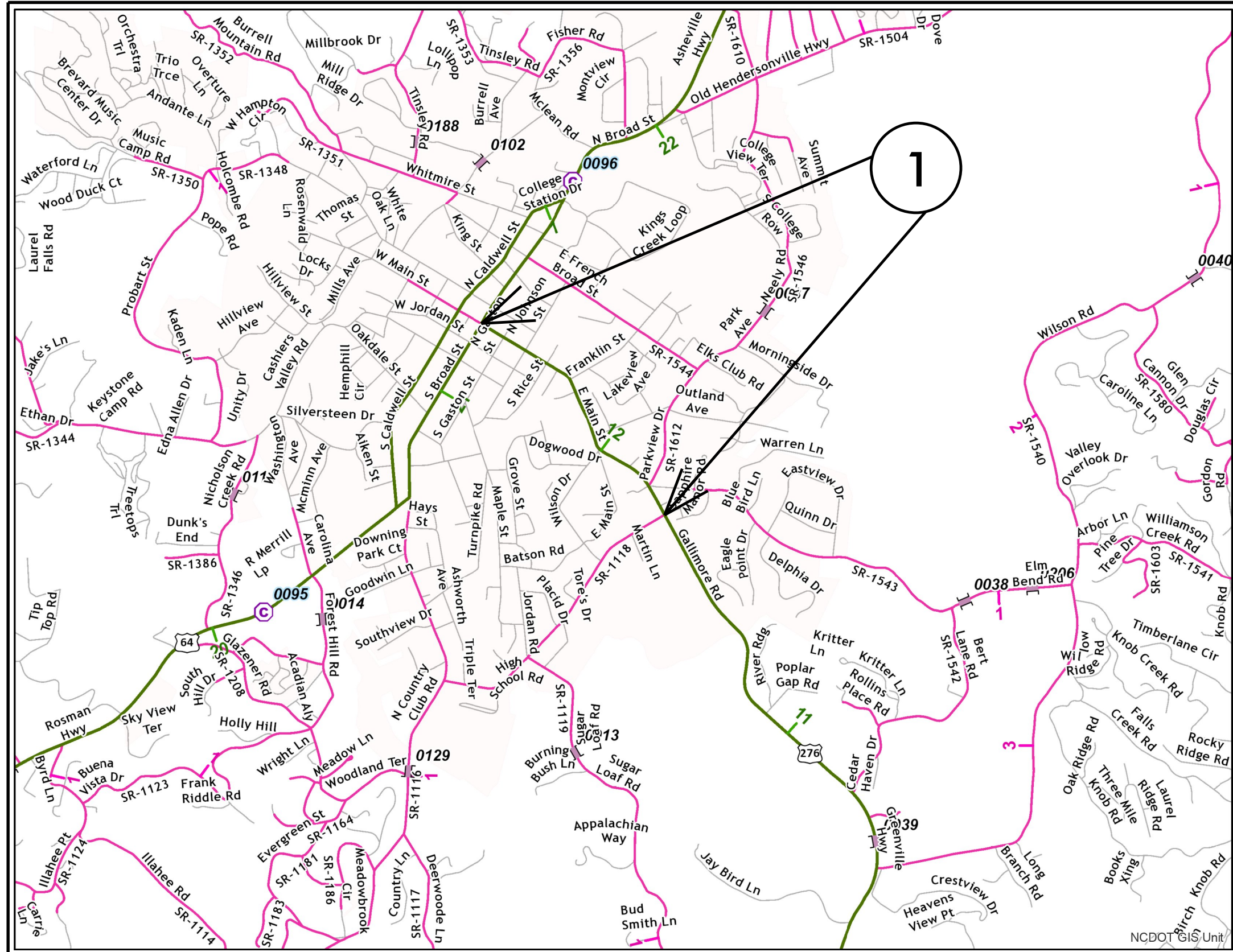
**This file or an individual page  
shall not be considered a certified document.**

PROJECT REFERENCE NO.	SHEET NO.
2022CPT.14.07.10881	1
STATE PROJECT	F.A. PROJECT NO.
	DESCRIPTION

# TRANSYLVANIA COUNTY

**TIP PROJECT: NA**

**CONTRACT: DN00744**



**MAP 1**



**BEG**



**END**







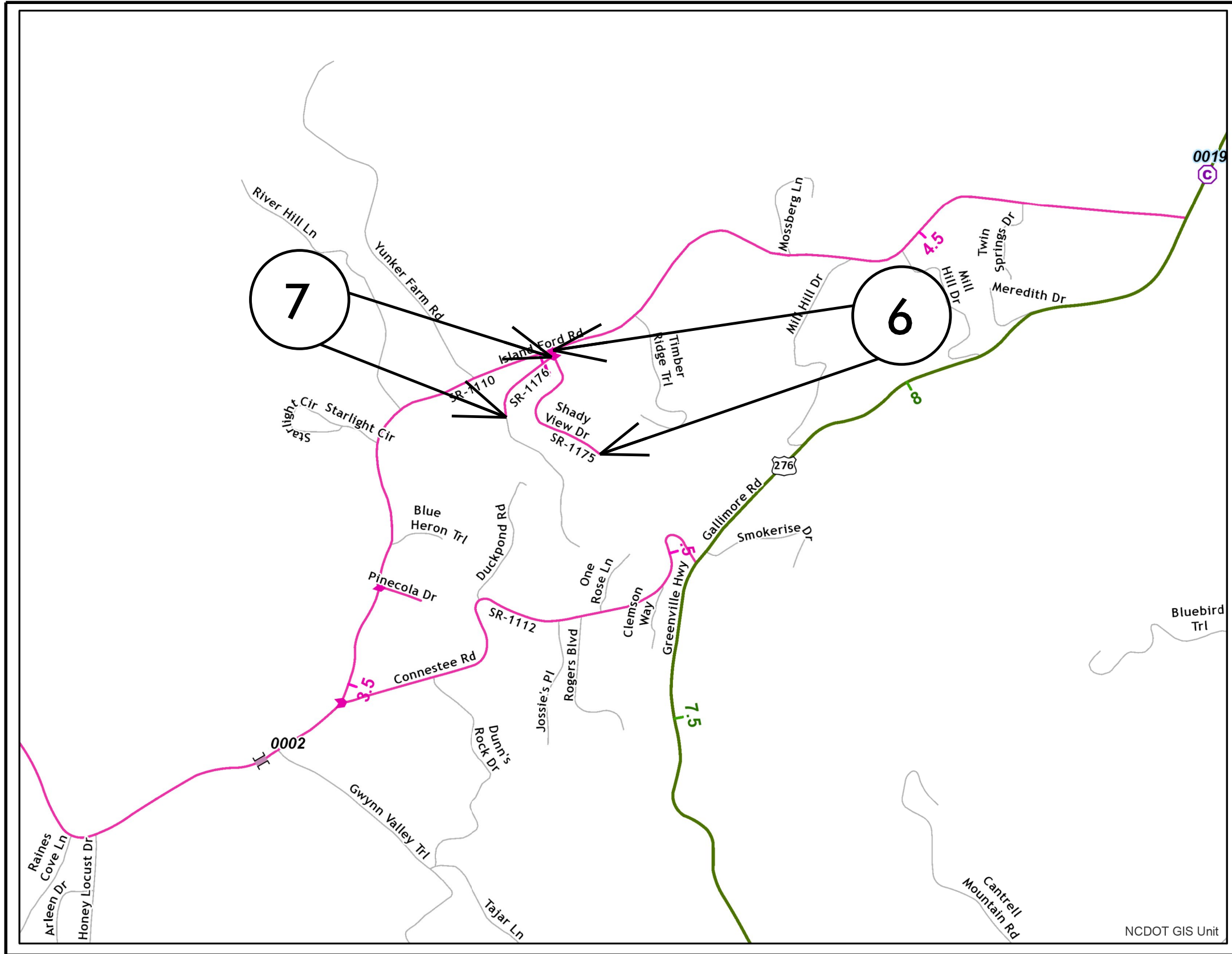


# TRANSYLVANIA COUNTY

PROJECT REFERENCE NO.		SHEET NO.
2022CPT.14.07.20881		6
STATE PROJECT	F.A. PROJECT NO.	DESCRIPTION

**TIP PROJECT: N/A**

**CONTRACT: DN00744**



**MAP 6**



**BEG**



**END**

**MAP 7**



**BEG**



**END**

PROJECT REFERENCE NO.	SHEET NO.	
2022CPT.14.07.20881	7	
STATE PROJECT	F.A. PROJECT NO.	DESCRIPTION

# TRANSYLVANIA COUNTY

**TIP PROJECT: NA**

**CONTRACT: DN00744**



**MAP 8**



**BEG**



**END**

**MAP 9**



**BEG**



**END**

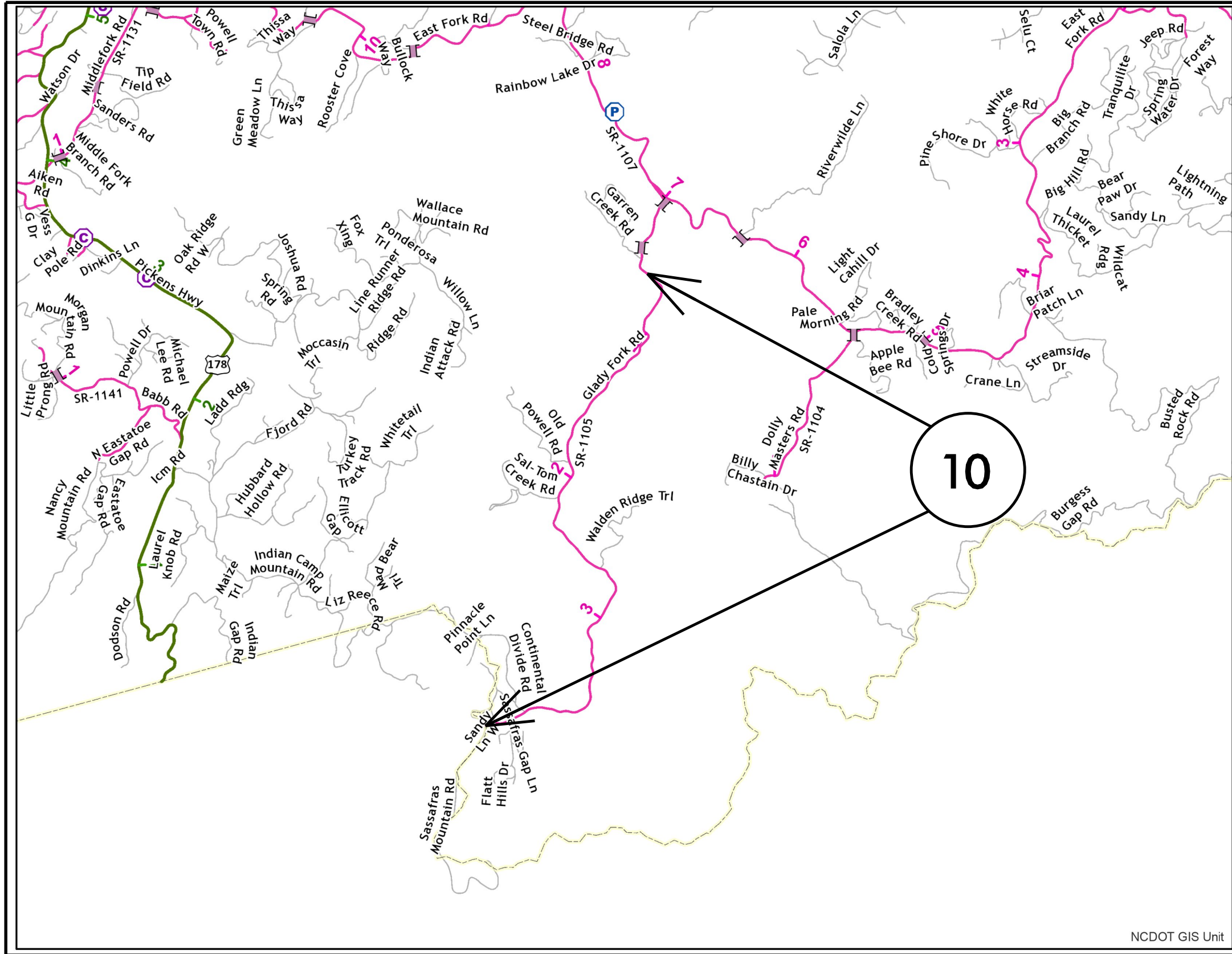


PROJECT REFERENCE NO.	SHEET NO.	
2022CPT.14.07.20881	8	
STATE PROJECT	F.A. PROJECT NO.	DESCRIPTION

# TRANSYLVANIA COUNTY

**TIP PROJECT: NA**

**CONTRACT: DN00744**



**MAP 10**



**BEG**



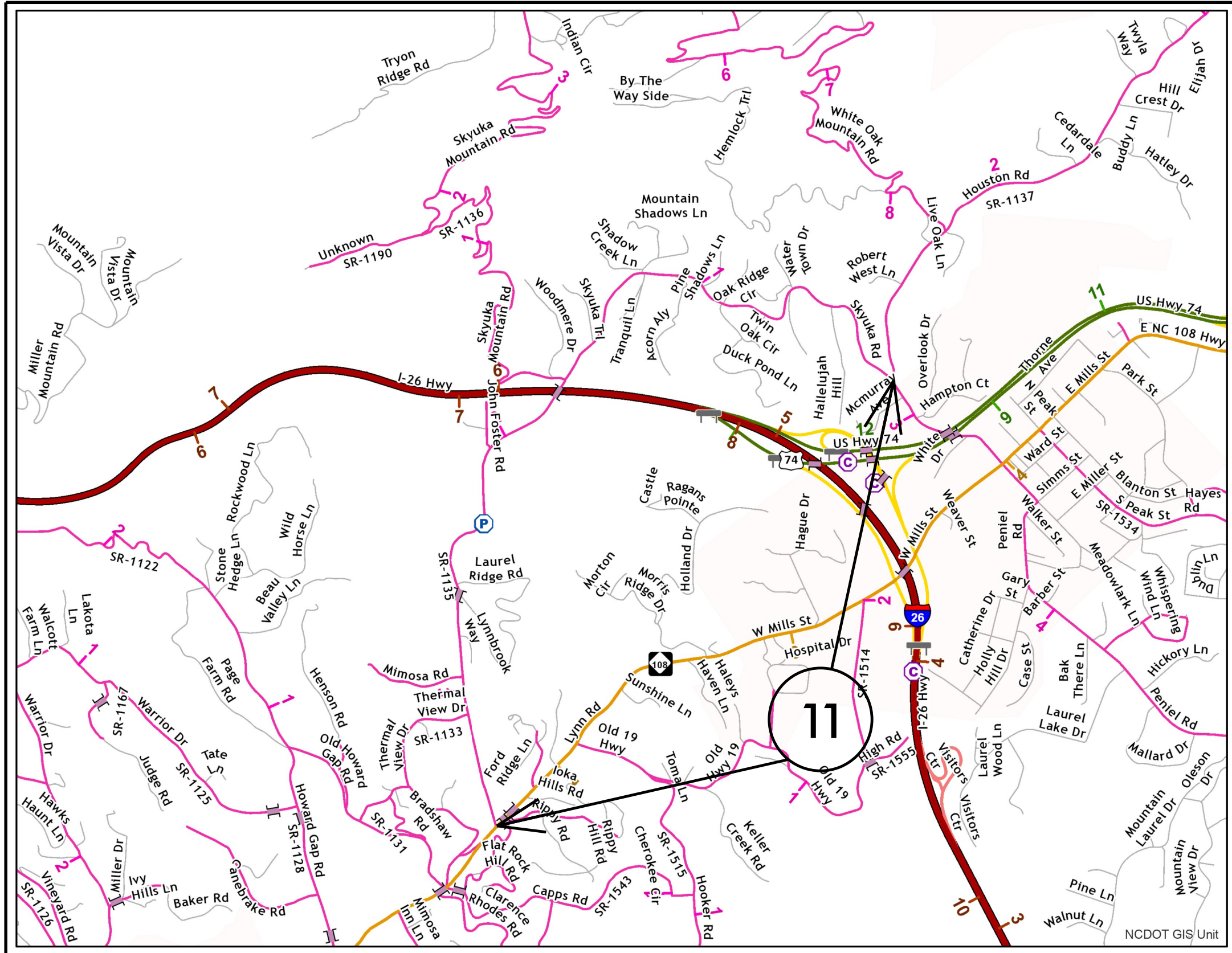
**END**

PROJECT REFERENCE NO.	SHEET NO.	
2022CPT.14.07.20751	9	
STATE PROJECT	F.A. PROJECT NO.	DESCRIPTION

# POLK COUNTY

**TIP PROJECT: N/A**

**CONTRACT: DN00744**



**MAP 11**



**BEG**

**END**



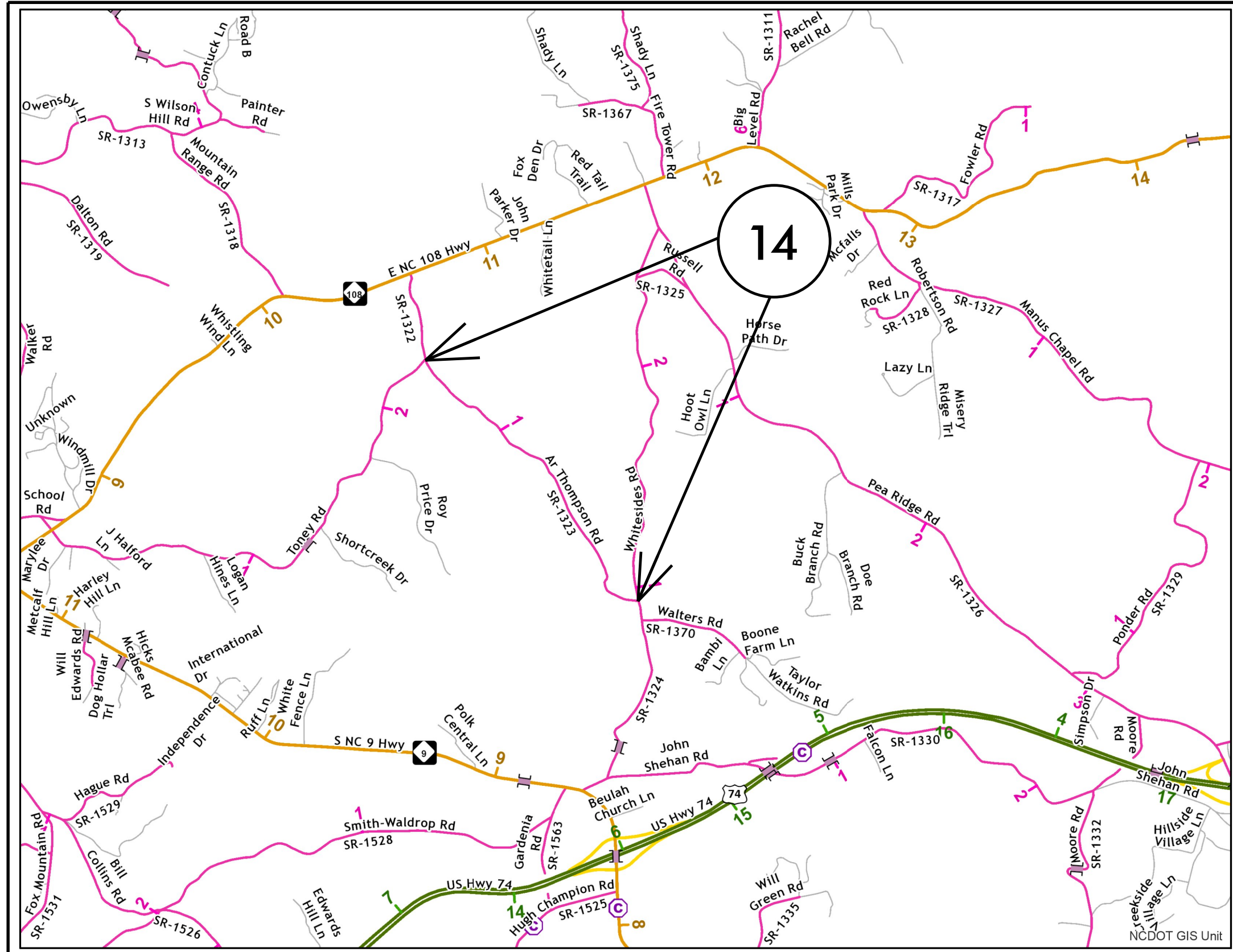


PROJECT REFERENCE NO.	SHEET NO.	
2021CPT.14.09.20751	12	
STATE PROJECT	F.A. PROJECT NO.	DESCRIPTION

# POLK COUNTY

**TIP PROJECT: N/A**

**CONTRACT: DN00744**



**MAP 14**



**BEG**



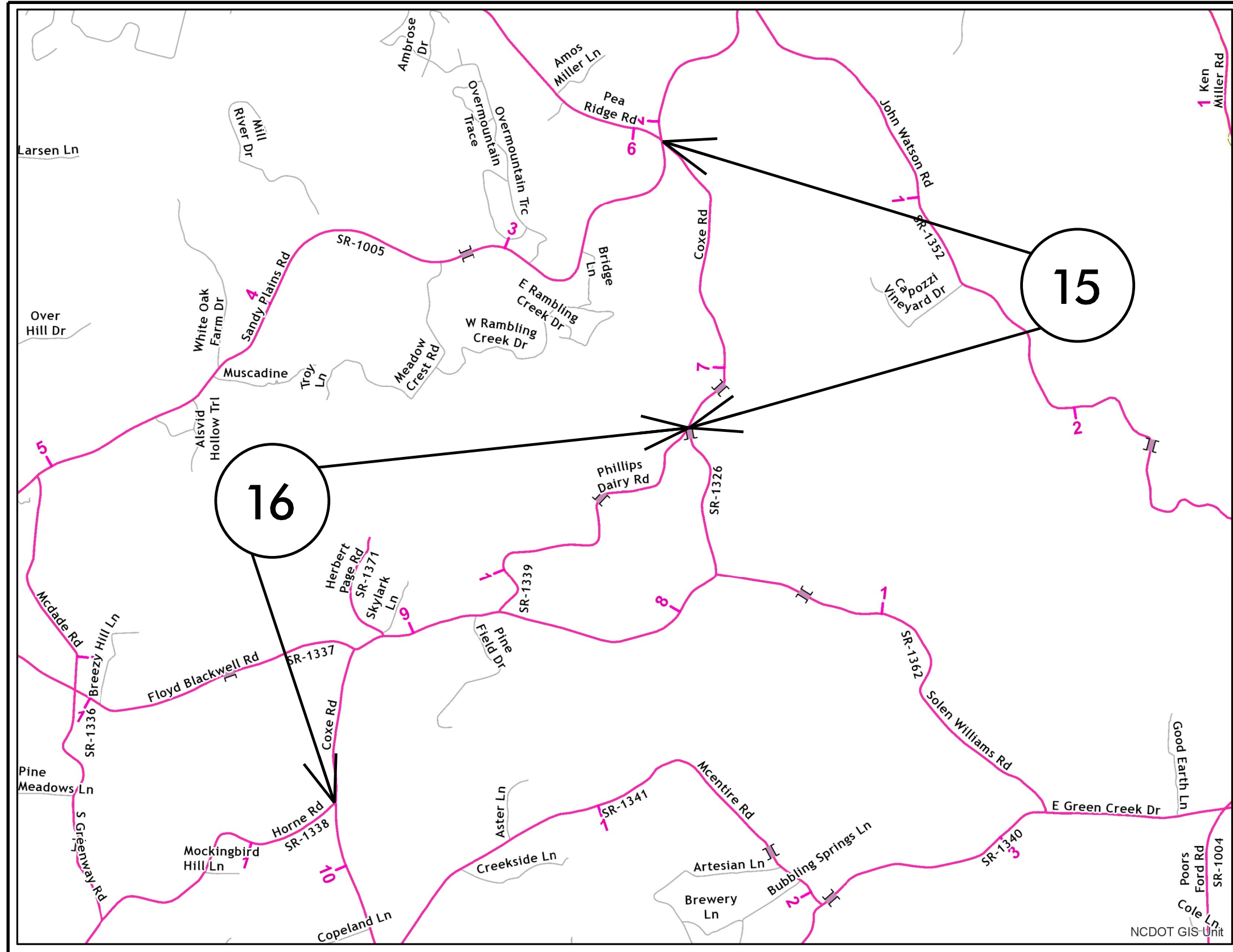
**END**

PROJECT REFERENCE NO.		SHEET NO.
2021CPT.14.09.20751		13
STATE PROJECT	F.A. PROJECT NO.	DESCRIPTION

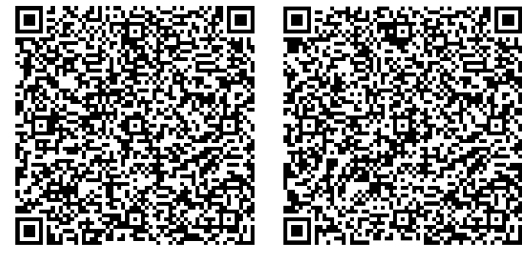
# POLK COUNTY

**TIP PROJECT: N/A**

**CONTRACT: DN00744**



**MAP 15**



**BEG END**

**MAP 16**



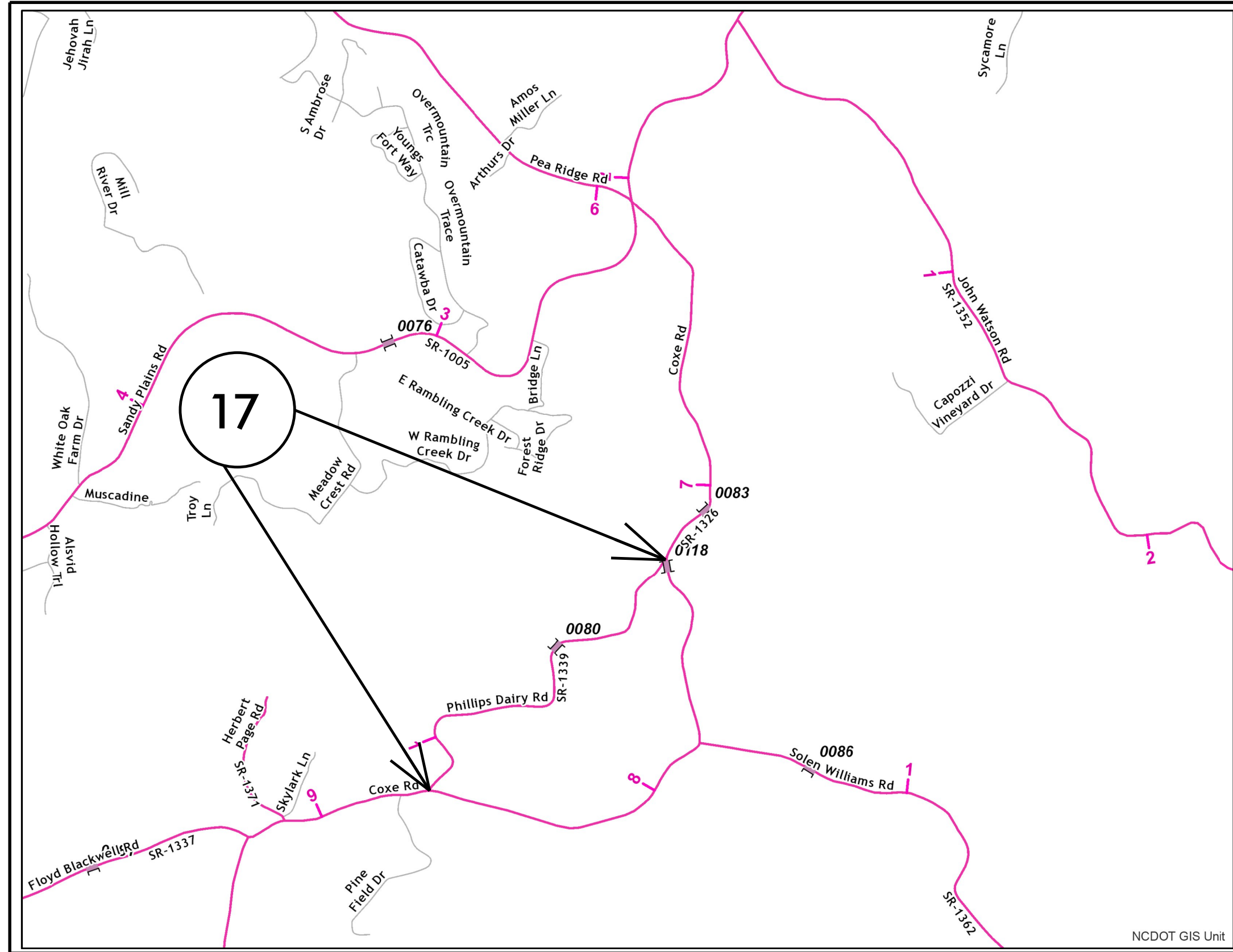
**BEG END**

PROJECT REFERENCE NO.		SHEET NO.
2021CPT.14.09.20751		14
STATE PROJECT	F.A. PROJECT NO.	DESCRIPTION

# POLK COUNTY

**TIP PROJECT: N/A**

**CONTRACT: DN00744**



**MAP 17**



**BEG**



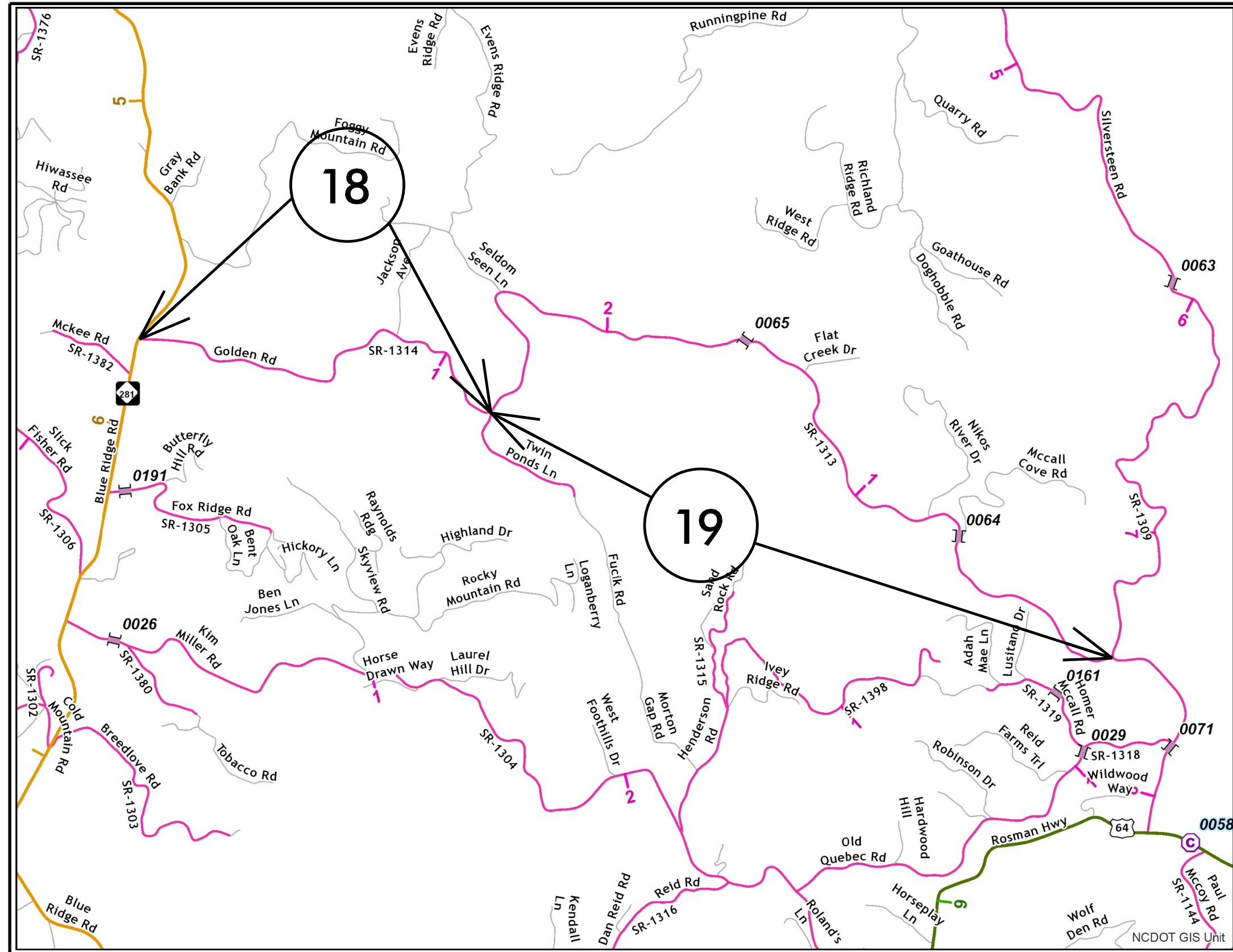
**END**

# TRANSYLVANIA COUNTY

PROJECT REFERENCE NO.		SHEET NO.
2021CPT.14.09.20881		15
STATE PROJECT	F.A. PROJECT NO.	DESCRIPTION

**TIP PROJECT: N/A**

**CONTRACT: DN00744**



MAP 18



BEG



END

MAP 19



BEG



END



NCDOT GIS Unit

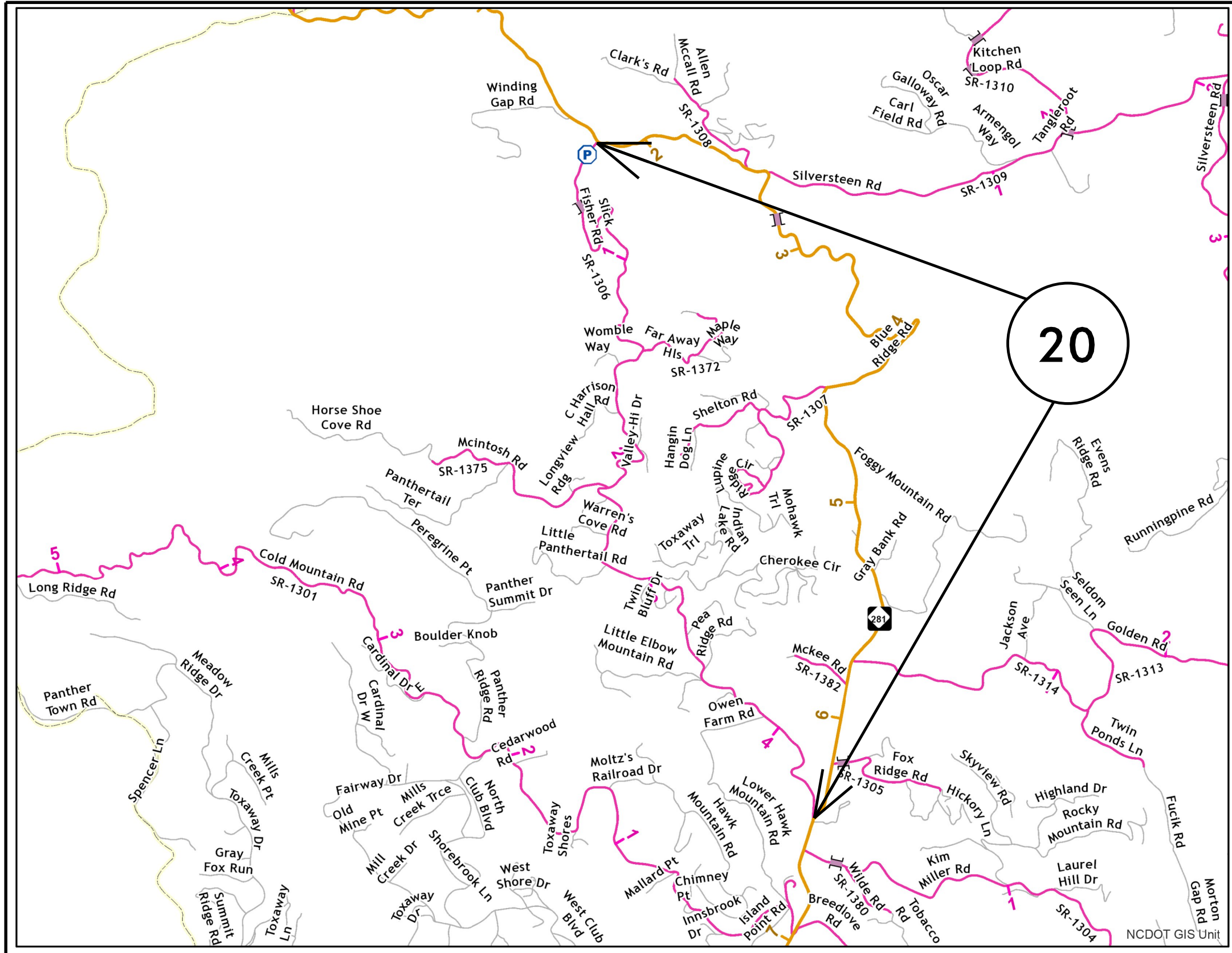


# TRANSYLVANIA COUNTY

PROJECT REFERENCE NO.		SHEET NO.
2021CPT.14.09.20881		16
STATE PROJECT	F.A. PROJECT NO.	DESCRIPTION

**TIP PROJECT: N/A**

**CONTRACT: DN00744**



**MAP 20**



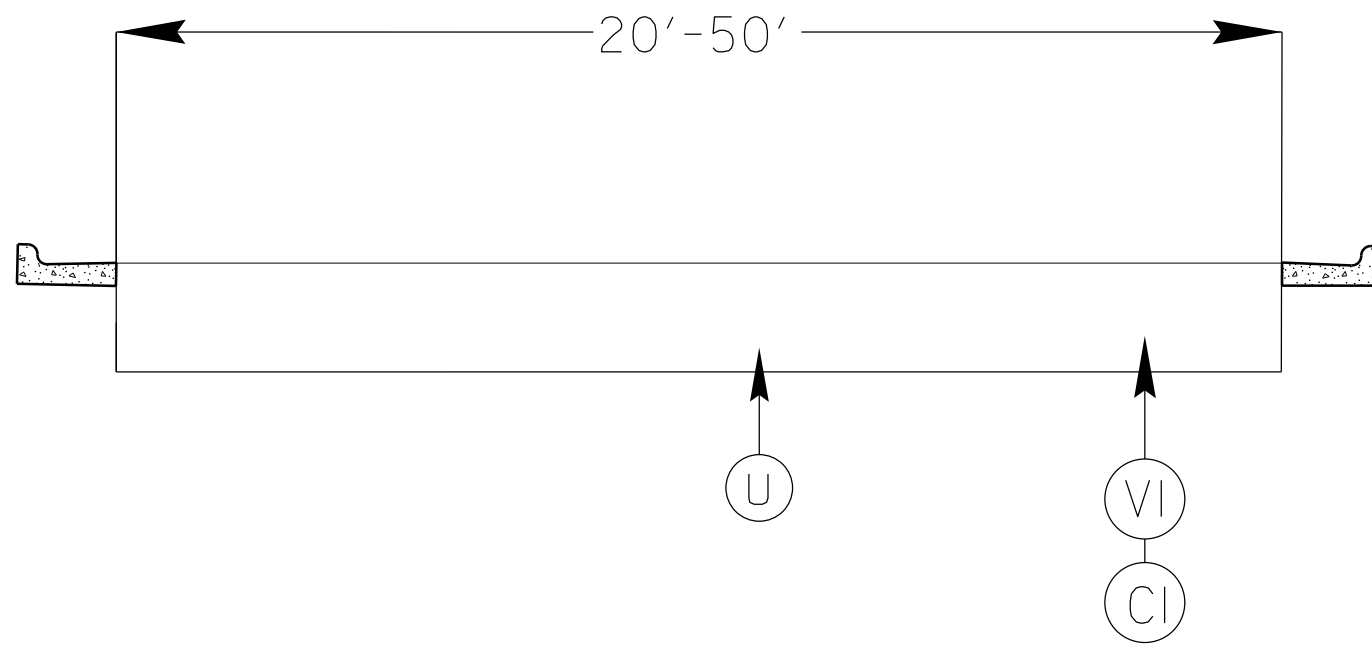
**BEG**



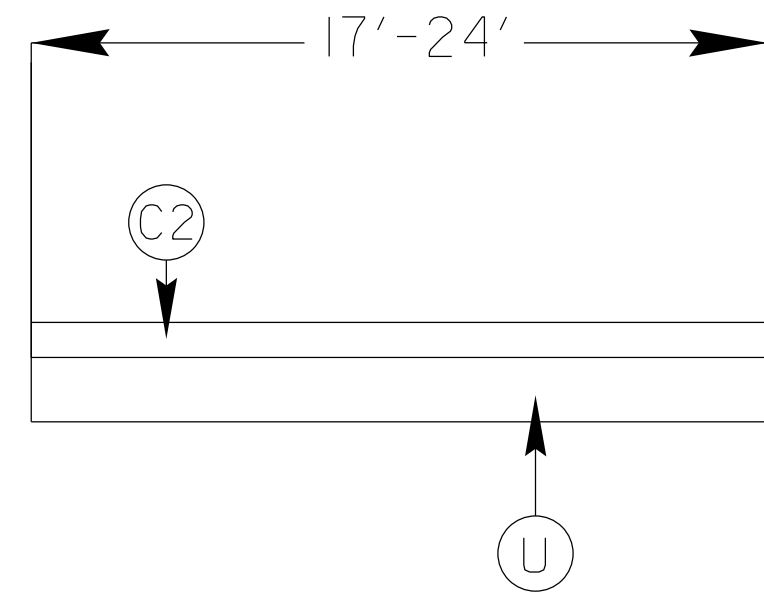
**END**

PROJECT REFERENCE NO.		SHEET NO.
2022CPT.14.07.10881		17
STATE PROJECT	F.A. PROJECT NO.	DESCRIPTION
2022CPT.14.07.20881		
2021CPT.14.09.20751		
2021CPT.14.09.20881		

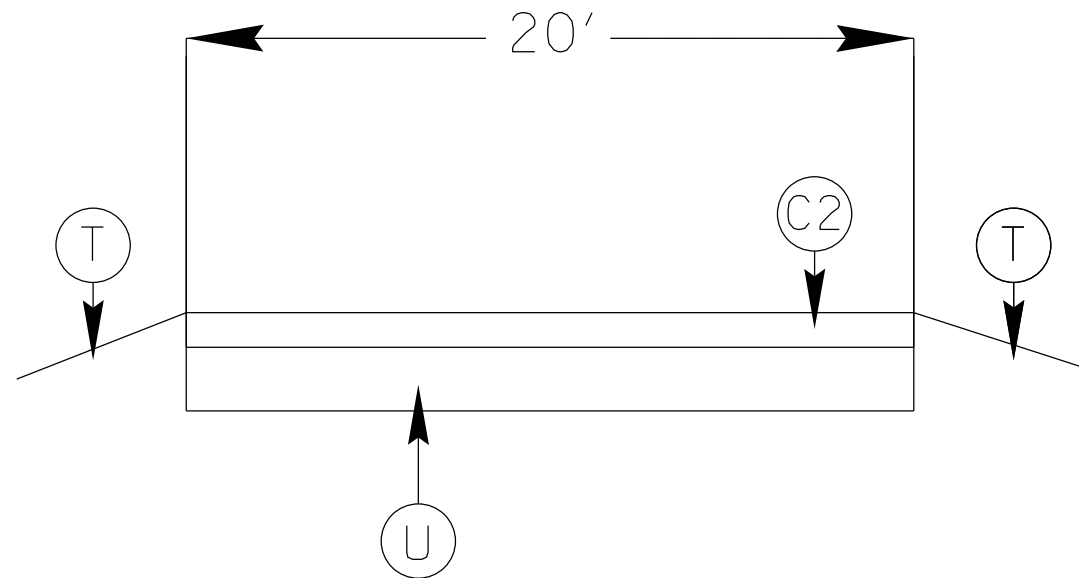
# TYPICAL 1



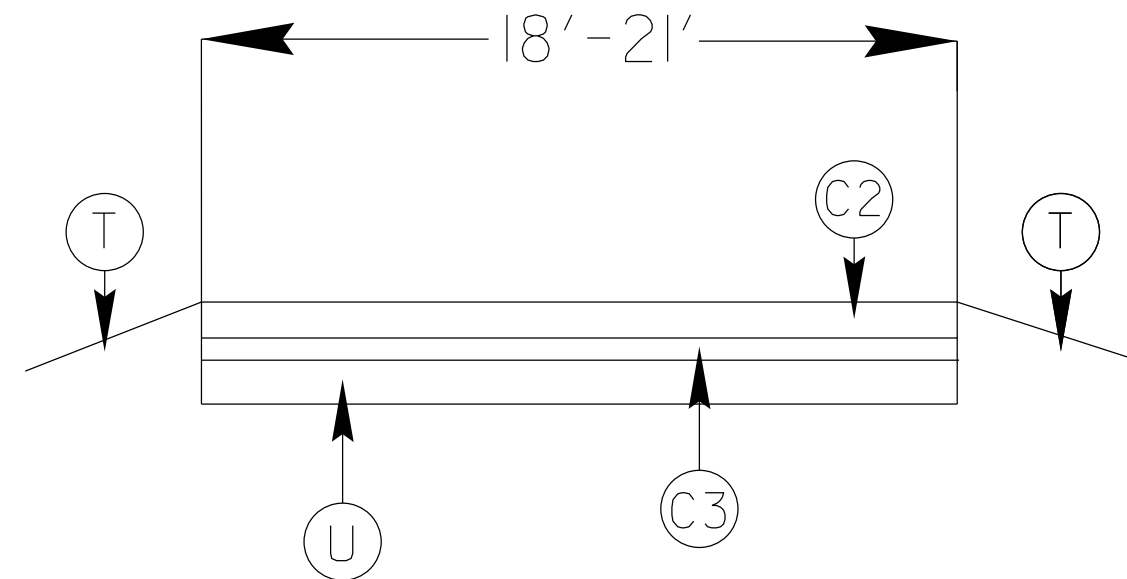
# TYPICAL 2



# TYPICAL 3



# TYPICAL 4



## SURFACING SCHEDULE

ITEM NO	DESCRIPTION
C1	PROP. APPROX. 1 1/2" ASPHALT CONCRETE SURFACE COURSE, TYPE SF9.5B AT AN AVERAGE RATE OF 168 LBS.PER.SQ.YD
C2	PROP. APPROX. 1 1/4" ASPHALT CONCRETE SURFACE COURSE, TYPE SF9.5B AT AN AVERAGE RATE OF 137.5 LBS.PER.SQ.YD
C3	PROP. APPROX. 3/4" ASPHALT CONCRETE SURFACE COURSE, (LEVELING) TYPE SF9.5B AT AN AVERAGE RATE OF 82.5 LBS.PER.SQ.YD
V1	MILLED ASPHALT PAVEMENT 1 1/2" IN DEPTH IN LOCATIONS AS DIRECTED BY PROJECT ENGINEER
T	SHOULDER RECONSTRUCTION
U	EXISTING ASPHALT

PROJECT NO.	SHEET NO.	TOTAL NO.
2022CPT.14.07.10881, 2022CPT.14.07.20881, 2022CPT.14.07.20751	19	
2021CPT.14.09.20751, 2021CPT.14.09.20881		

### SUMMARY OF QUANTITIES

PROJECT NO	COUNTY	MAP NO	ROUTE	DESCRIPTION	TYP NO	LANES	LANE TYPE	FINAL SURFACE TESTING REQUIRED	WARM MIX ASPHALT REQUIRED	LENGTH	WIDTH	1245000000-E	1297000000-E	1330000000-E	1519000000-E	1520000000-E	1575000000-E	1704000000-E	2374000000-N	2549000000-E	2591000000-E	2613000000-N	2800000000-N	2830000000-N	2845000000-N	7444000000-E	7456000000-E				
												SHOULDER RECONSTRUCTION	1 1/2" MILLING	INCIDENTAL MILLING	SURFACE COURSE, \$9.5B	LEVELING COURSE, \$9.5B	ASPHALT BINDER FOR PLANT MIX	PATCHING EXISTING PAVEMENT	FRAME WITH GRATE & HOOD, STD 840.03, TYPE F A EA	2'-6" CURB & GUTTER	4" CONCRETE SIDEWALK	REMOVE AND REPLACE CURB RAMPS	ADJ. OF CATCH BASIN	ADJ. OF MANHOLES	ADJ. OF METER OR VALVE BOX	INDUCTIVE LOOP	LEAD-IN CABLE (14-2)				
												MI	FT	SMI	SY	SY	TONS	TONS	TONS	TONS	EA	LF	SY	EA	EA	EA	EA	EA	EA	EA	EA
2022CPT.14.07.10881	Transylvania	1	US 276	FROM SR-1118 TO US 64	1	3	MU	NO	NO	0.8	40		20,546		1,753		117	65	1.00	500	11	40	1	7	27	3,355	200				
<b>TOTAL FOR MAP NO. 1</b>												<b>0.8</b>			<b>20,546</b>		<b>1,753</b>		<b>117</b>	<b>65</b>	<b>1.00</b>	<b>500</b>	<b>11</b>	<b>40</b>	<b>1</b>	<b>7</b>	<b>27</b>	<b>3,355</b>	<b>200</b>		
<b>TOTAL FOR PROJ NO. 2022CPT.14.07.10881</b>												<b>0.8</b>			<b>20,546</b>		<b>1,753</b>		<b>117</b>	<b>65</b>	<b>1.00</b>	<b>500</b>	<b>11</b>	<b>40</b>	<b>1</b>	<b>7</b>	<b>27</b>	<b>3,355</b>	<b>200</b>		
2022CPT.14.07.20881	Transylvania	2	SR-1207 (BARCLAY) BRIDGE	FROM US 276 TO SR-1113	2	2	2WU	NO	NO	1.81	20		345	134	1,522		102														
<b>TOTAL FOR MAP NO. 2</b>												<b>1.81</b>			<b>345</b>	<b>134</b>	<b>1,522</b>		<b>102</b>												
2022CPT.14.07.20881	Transylvania	3	SR-1195 (CALVERT RD)	FROM SR-1388 TO SR-1388	2	2	2WU	NO	NO	1.16	20		184	184	1,025		69			117											
<b>TOTAL FOR MAP NO. 3</b>												<b>1.16</b>				<b>184</b>	<b>1,025</b>		<b>69</b>		<b>117</b>										
2022CPT.14.07.20881	Transylvania	4	SR-1580 (GLEN CANNON) BRIDGE	FROM SR-1540 TO END OF MAINT.	2	2	2WU	NO	NO	1.81	20		78	134	1,614		108	657													
<b>TOTAL FOR MAP NO. 4</b>												<b>1.81</b>			<b>78</b>	<b>134</b>	<b>1,614</b>		<b>108</b>	<b>657</b>											
2022CPT.14.07.20881	Transylvania	5	SR-1116 (NORTH COUNTRY CLUB)	FROM SR-1207 TO SR-1121	2	2	2WU	NO	NO	0.98	20		134	134	920		62														
<b>TOTAL FOR MAP NO. 5</b>												<b>0.98</b>				<b>134</b>	<b>920</b>		<b>62</b>												
2022CPT.14.07.20881	Transylvania	6	SR-1175 (SHADY VIEW)	FROM SR-1110 TO END OF MAINT.	2	2	2WU	NO	NO	0.13	17		134	134	93		6	73													
<b>TOTAL FOR MAP NO. 6</b>												<b>0.13</b>				<b>134</b>	<b>93</b>		<b>6</b>	<b>73</b>											
2022CPT.14.07.20881	Transylvania	7	SR-1176 (WHIPPOORWILL ROAD)	FROM SR-1175 TO EOM	2	2	2WU	NO	NO	0.14	17		134	134	98		7	69													
<b>TOTAL FOR MAP NO. 7</b>												<b>0.14</b>				<b>134</b>	<b>98</b>		<b>7</b>	<b>69</b>											
2022CPT.14.07.20881	Transylvania	8	SR-1349 (W MAIN STREET)	FROM US 64 TO CALDWELL ST	1	3	MU	NO	NO	0.052	50		1,525		136		9			50	30	1		1	2	460	20				
<b>TOTAL FOR MAP NO. 8</b>												<b>0.052</b>					<b>1,525</b>		<b>9</b>		<b>50</b>	<b>30</b>	<b>1</b>		<b>1</b>	<b>2</b>	<b>460</b>	<b>20</b>			
2022CPT.14.07.20881	Transylvania	9	SR-1349 (W MAIN STREET)	FROM CALDWELL STREET TO OAKLAWN STREET	1	4	MU	NO	NO	0.15	50		4,400		400		27	23		50	30	4		3	5						
<b>TOTAL FOR MAP NO. 9</b>												<b>0.15</b>					<b>4,400</b>		<b>27</b>	<b>23</b>	<b>50</b>	<b>30</b>	<b>4</b>		<b>3</b>	<b>5</b>					
2022CPT.14.07.20881	Transylvania	10	SR-1105 (GLADY FORK ROAD)	FROM .6 MILES SOUTH OF SR-1107 TO SC LINE	2	2	2WU	NO	NO	3.6	21	7.20		140	3,769		253	587													
<b>TOTAL FOR MAP NO. 10</b>												<b>3.6</b>				<b>140</b>	<b>3,769</b>		<b>253</b>	<b>587</b>											
<b>TOTAL FOR PROJ NO. 2022CPT.14.07.20881</b>												<b>9.832</b>				<b>140</b>	<b>9,577</b>		<b>643</b>	<b>1,409</b>		<b>217</b>	<b>60</b>	<b>5</b>		<b>4</b>	<b>7</b>	<b>460</b>	<b>20</b>		
2022CPT.14.07.20751	Polk	11	SR-1135 (SKYUKA)	FROM NC 108 TO SR-1137	4	2	MU	NO	NO	3.49	18	6.98			2,803	1,508	289	503													
<b>TOTAL FOR MAP NO. 11</b>												<b>3.49</b>					<b>2,803</b>	<b>1,508</b>	<b>289</b>	<b>503</b>											
2022CPT.14.07.20751	Polk	12	SR 1360 (PHILLIP HENDERSON RD)	SR SR 1004 TO EOM	3	2	2WU	NO	NO	0.78	18	1.56			694		47														
<b>TOTAL FOR MAP NO. 12</b>												<b>0.78</b>					<b>694</b>		<b>47</b>												
2022CPT.14.07.20751	Polk	13	SR 1352 (JOHN WATSON RD)	SR 1005 TO SR 1302	3	2	2WU	NO	NO	3.84	18	7.68			2,804		188														
<b>TOTAL FOR MAP NO. 13</b>												<b>3.84</b>					<b>2,804</b>		<b>188</b>												
<b>TOTAL FOR PROJ NO. 2022CPT.14.07.20751</b>												<b>8.11</b>					<b>6,301</b>	<b>1,508</b>	<b>524</b>	<b>503</b>											
2021CPT.14.09.20751	Polk	14	SR-1323 (AR THOMPSON)	FROM SR-1322 TO SR-1324	4	2	2WU	NO	NO	1.4	20	2.80		67	1,160	690	124														
<b>TOTAL FOR MAP NO. 14</b>												<b>1.4</b>				<b>67</b>	<b>1,160</b>	<b>690</b>	<b>124</b>												
2021CPT.14.09.20751	Polk	15	SR-1326 (COXE ROAD)	FROM SR-1005 TO SR-1339	2	2	2WU	NO	NO	2.6	18	2,088			140		250														
<b>TOTAL FOR MAP NO. 15</b>												<b>2.6</b>					<b>2,088</b>		<b>140</b>	<b>250</b>											
2021CPT.14.09.20751	Polk	16	SR-1326 (COXE ROAD)	FROM SR-1339 TO SR-1338	2	2	2WU	NO	NO	1	18	803			54		80														
<b>TOTAL FOR MAP NO. 16</b>												<b>1</b>					<b>803</b>		<b>54</b>	<b>80</b>											
2021CPT.14.09.20751	Polk	17	SR-1339 (PHILLIPS DAIRY ROAD)	FROM SR-1326 TO SR-1326	4	2	2WU	NO	NO	1.19	21	2.38			1,114	627	117	211													
<b>TOTAL FOR MAP NO. 17</b>												<b>1.19</b>					<b>1,114</b>	<b>627</b>	<b>117</b>	<b>211</b>											
<b>TOTAL FOR PROJ NO. 2021CPT.14.09.20751</b>												<b>6.19</b>				<b>67</b>	<b>5,165</b>	<b>1,317</b>	<b>435</b>	<b>541</b>											
2021CPT.14.09.20881	Transylvania	18	SR-1314 (GOLDEN ROAD)	FROM NC 281 TO SR-1313	3	2	2WU	NO	NO	1.23	20	2.46			1,072		72	352													
<b>TOTAL FOR MAP NO. 18</b>												<b>1.23</b>					<b>1,072</b>		<b>72</b>	<b>352</b>											
2021CPT.14.09.20881	Transylvania	19	SR-1313 (GOLDEN ROAD)	FROM SR-1314 TO SR-1309	3	2	2WU	NO	NO	2.62	20	5.24	66	222	2,166		145	402													
<b>TOTAL FOR MAP NO. 19</b>												<b>2.62</b>				<b>66</b>	<b>2,166</b>		<b>145</b>	<b>402</b>											
2021CPT.14.09.20881	Transylvania	20	SR-1306 (LUCK FISHER)	FROM NC 281 TO NC 281	2	2	2WU	NO	NO	4.38	20	67	134	3,661		245	792														
<b>TOTAL FOR MAP NO. 20</b>												<b>4.38</b>				<b>67</b>	<b>134</b>		<b>245</b>	<b>792</b>											
<b>TOTAL FOR PROJ NO. 2021CPT.14.09.20881</b>												<b>8.23</b>				<b>7.70</b>	<b>133</b>	<b>356</b>	<b>6,899</b>	<b>462</b>	<b>1,546</b>										
<b>GRAND TOTAL</b>												<b>33.162</b>				<b>36.30</b>	<b>27,027</b>	<b>1,417</b>	<b>29,695</b>	<b>2,825</b>	<b>2,181</b>	<b>4,064</b>	<b>1.00</b>	<b>717</b>	<b>71</b>	<b>45</b>	<b>1</b>	<b>11</b>	<b>34</b>	<b>3,815</b>	<b>220</b>

PROJECT NO.	SHEET NO.	TOTAL NO.
2022CPT.14.07.10881, 2022CPT.14.07.20881, 2022CPT.14.07.20751	20	
2021CPT.14.09.20751, 2021CPT.14.09.20881		

### THERMOPLASTIC AND PAINT QUANTITIES

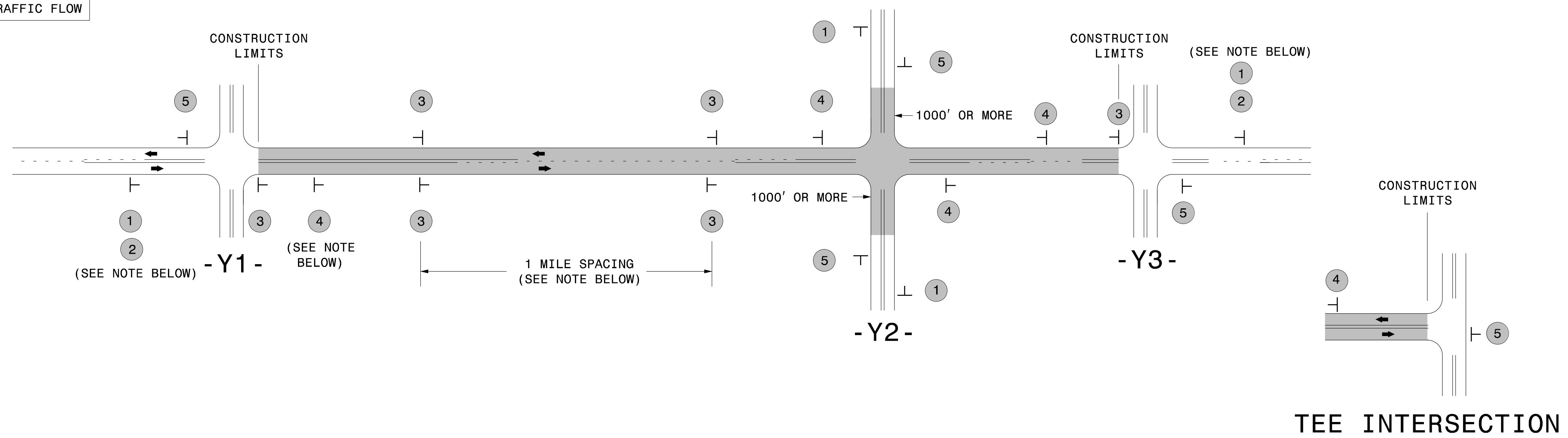
PROJECT NO	COUNTY	MAP NO	ROUTE	DESCRIPTION	TYP NO	LANES	LANE TYPE	LENGTH	WIDTH	441300000-E	445700000-N	469500000-E	472500000-E				481000000-E		483500000-E		484500000-N		489000000-E		489100000-E	489200000-N		
										WORK ZONE ADVANCE/GENERAL WARNING SIGNING	TEMPORARY TRAFFIC CONTROL	8" X 90 M WHITE THERMO	THERMO LT ARROW 90 M	THERMO STR & RT ARROW 90 M	THERMO STR ARROW 90 M	THERMO RT ARROW 90 M	4" WHITE PAINT	4" YELLOW PAINT	24" WHITE PAINT	PAINT LT ARROW	PAINT STR & RT ARROW	GENERIC PAVE. MARK ITEM 4" X 50 MIL WHITE THERMO	GENERIC PAVE. MARK ITEM 4" X 50 MIL YELLOW THERMO.	GENERIC PAVEMENT MARKING ITEM 24" 90MIL THERMO MARKING LINE	GENERIC PAVEMENT MARKING MSG SCHOOL 90 MIL			
									MI	FT	SF	LS	LF	EA	EA	EA	EA	LF	LF	LF	EA	EA	LF	LF	LF	EA	EA	
2022CPT.14.07.10881	Transylvania	1	US 276	FROM SR-1118 TO US 64	1	3	MU	0.8	40	126	1.00	600	12	3	2	5			300				4,056	8,448	900.0	6.0		
<b>TOTAL FOR MAP NO. 1</b>									<b>0.8</b>		<b>126</b>	<b>1</b>	<b>600</b>	<b>12</b>	<b>3</b>	<b>2</b>	<b>5</b>			<b>300</b>				<b>4,056</b>	<b>8,448</b>	<b>900.0</b>	<b>6</b>	
<b>TOTAL FOR PROJ NO. 2022CPT.14.07.10881</b>									<b>0.8</b>		<b>126</b>	<b>1</b>	<b>600</b>	<b>12</b>	<b>3</b>	<b>2</b>	<b>5</b>			<b>300</b>				<b>4,056</b>	<b>8,448</b>	<b>900.0</b>	<b>6</b>	
											<b>22</b>										<b>12,504</b>							
2022CPT.14.07.20881	Transylvania	2	SR-1207 (BARCLAY) BRIDGE	FROM US 276 TO SR-1113	2	2	2WU	1.81	20	185																		
<b>TOTAL FOR MAP NO. 2</b>									<b>1.81</b>		<b>185</b>																	
2022CPT.14.07.20881	Transylvania	3	SR-1195 (CALVERT RD)	FROM SR-1388 TO SR-1388	2	2	2WU	1.16	20	184																		
<b>TOTAL FOR MAP NO. 3</b>									<b>1.16</b>		<b>184</b>																	
2022CPT.14.07.20881	Transylvania	4	SR-1580 (GLEN CANNON) BRIDGE	FROM SR-1540 TO END OF MAINT.	2	2	2WU	1.81	20	185																		
<b>TOTAL FOR MAP NO. 4</b>									<b>1.81</b>		<b>185</b>																	
2022CPT.14.07.20881	Transylvania	5	SR-1116 (NORTH COUNTRY CLUB)	FROM SR-1207 TO SR-1121	2	2	2WU	0.98	20	102																		
<b>TOTAL FOR MAP NO. 5</b>									<b>0.98</b>		<b>102</b>																	
2022CPT.14.07.20881	Transylvania	6	SR-1175 (SHADY VIEW)	FROM SR-1110 TO END OF MAINT.	2	2	2WU	0.13	17	13																		
<b>TOTAL FOR MAP NO. 6</b>									<b>0.13</b>		<b>13</b>																	
2022CPT.14.07.20881	Transylvania	7	SR-1176 (WHIPPOORWILL ROAD)	FROM SR-1175 TO EOM	2	2	2WU	0.14	17	13																		
<b>TOTAL FOR MAP NO. 7</b>									<b>0.14</b>		<b>13</b>																	
2022CPT.14.07.20881	Transylvania	8	SR-1349 (W MAIN STREET)	FROM US 64 TO CALDWELL ST	1	3	MU	0.052	50	12																950.0		
<b>TOTAL FOR MAP NO. 8</b>									<b>0.052</b>		<b>12</b>																<b>950.0</b>	
2022CPT.14.07.20881	Transylvania	9	SR-1349 (W MAIN STREET)	FROM CALDWELL STRRET TO OAKLAWN STREET)	1	4	MU	0.15	50	12																		
<b>TOTAL FOR MAP NO. 9</b>									<b>0.15</b>		<b>12</b>																	
2022CPT.14.07.20881	Transylvania	10	SR-1105 (GLADY FORK ROAD)	FROM .6 MILES SOUTH OF SR-1107 TO SC LINE	2	2	2WU	3.6	21	367																		
<b>TOTAL FOR MAP NO. 10</b>									<b>3.6</b>		<b>367</b>																	
<b>TOTAL FOR PROJ NO. 2022CPT.14.07.20881</b>									<b>9.832</b>		<b>1,073</b>																	
											<b>202,546</b>				<b>202,546</b>		<b>120</b>		<b>3</b>		<b>3</b>		<b>950</b>					
											<b>405,092</b>																	
2022CPT.14.07.20751	Polk	11	SR-1135 (SKYUKA)	FROM NC 108 TO SR-1137	4	2	MU	3.49	18	349																		
<b>TOTAL FOR MAP NO. 11</b>									<b>3.49</b>		<b>349</b>																	
2022CPT.14.07.20751	Polk	12	SR 1360 (PHILLIP HENDERSON RD)	SR SR 1004 TO EOM	3	2	2WU	0.78	18	185																		
<b>TOTAL FOR MAP NO. 12</b>									<b>0.78</b>		<b>185</b>																	
2022CPT.14.07.20751	Polk	13	SR 1352 (JOHN WATSON RD)	SR 1005 TO SR 1302	3	2	2WU	3.84	18	349																		
<b>TOTAL FOR MAP NO. 13</b>									<b>3.84</b>		<b>349</b>																	
<b>TOTAL FOR PROJ NO. 2022CPT.14.07.20751</b>									<b>8.11</b>		<b>883</b>																	
											<b>172,591</b>				<b>134,152</b>													
											<b>306,743</b>																	
2021CPT.14.09.20751	Polk	14	SR-1323 (AR THOMPSON)	FROM SR-1322 TO SR-1324	4	2	2WU	1.4	20	143																		
<b>TOTAL FOR MAP NO. 14</b>									<b>1.4</b>		<b>143</b>																	
2021CPT.14.09.20751	Polk	15	SR-1326 (COXE ROAD)	FROM SR-1005 TO SR-1339	2	2	2WU	2.6	18	265																		
<b>TOTAL FOR MAP NO. 15</b>									<b>2.6</b>		<b>265</b>																	
2021CPT.14.09.20751	Polk	16	SR-1326 (COXE ROAD)	FROM SR-1339 TO SR-1338	2	2	2WU	1	18	102																		
<b>TOTAL FOR MAP NO. 16</b>									<b>1</b>		<b>102</b>																	
2021CPT.14.09.20751	Polk	17	SR-1339 (PHILLIPS DAIRY ROAD)	FROM SR-1326 TO SR-1326	4	2	2WU	1.19	21	114																		
<b>TOTAL FOR MAP NO. 17</b>									<b>1.19</b>		<b>114</b>																	
<b>TOTAL FOR PROJ NO. 2021CPT.14.09.20751</b>									<b>6.19</b>		<b>624</b>																	
											<b>131,918</b>				<b>131,918</b>													
											<b>263,836</b>																	
2021CPT.14.09.20881	Transylvania	18	SR-1314 (GOLDEN ROAD)	FROM NC 281 TO SR-1313	3	2	2WU	1.23	20	126																		
<b>TOTAL FOR MAP NO. 18</b>									<b>1.23</b>		<b>126</b>																	
2021CPT.14.09.20881	Transylvania	19	SR-1313 (GOLDEN ROAD)	FROM SR-1314 TO SR-1309	3	2	2WU	2.62	20	267																		
<b>TOTAL FOR MAP NO. 19</b>									<b>2.62</b>		<b>267</b>																	
2021CPT.14.09.20881	Transylvania	20	SR-1306 (SLICK FISHER)	FROM NC 281 TO NC 281	2	2	2WU	4.38	20	448																		
<b>TOTAL FOR MAP NO. 20</b>									<b>4.38</b>		<b>448</b>																	
<b>TOTAL FOR PROJ NO. 2021CPT.14.09.20881</b>									<b>8.23</b>		<b>841</b>																	
											<b>177,110</b>				<b>177,092</b>													
											<b>354,202</b>																	
<b>GRAND TOTAL</b>								<b>33.162</b>		<b>3,547</b>	<b>1</b>	<b>600</b>	<b>12</b>	<b>3</b>	<b>2</b>	<b>5</b>	<b>684,165</b>	<b>645,708</b>	<b>420</b>	<b>3</b>	<b>3</b>	<b>4,056</b>	<b>8,448</b>	<b>1,850</b>	<b>6</b>			
											<b>22</b>				<b>1,329,873</b>		<b>6</b>		<b>12,504</b>									

# SIGNING FOR RESURFACING PROJECTS

**LEGEND**

┆ STATIONARY SIGN

← DIRECTION OF TRAFFIC FLOW



## MAINLINE (-L-) SIGNING

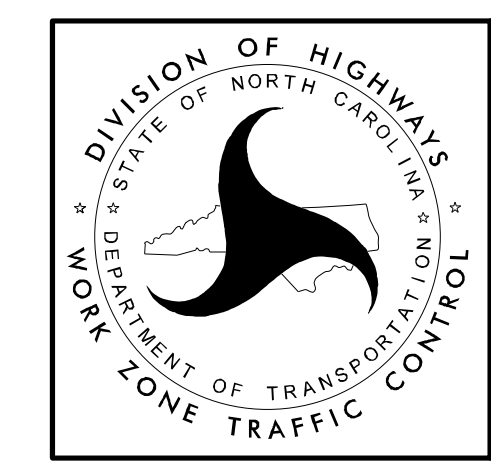
## -Y- LINE SIGNING

SIGNING NOTES AND PLACEMENT PER DIRECTION	1	 W20-1 48" X 48"	PLACE 1000' PRIOR TO BEGINNING OF CONSTRUCTION LIMITS. ONLY USED ON -Y- LINES IF RESURFACING LIMITS EXTEND 1000' ALONG -Y- LINE.	NO REQUIRED STATIONARY SIGNING FOR THE FOLLOWING -Y- LINE CONDITIONS:  1) LESS THAN 1000' OF RESURFACING ALONG -Y- LINE 2) SUBDIVISION ROADS 3) DEAD END ROADS  WHEN PAVING/CONSTRUCTION ACTIVITIES PROCEED ACROSS AN UNSIGNED -Y- LINE, PORTABLE ADVANCE WARNING SIGNS SHALL BE USED ALONG THE -Y- LINE AS SHOWN BELOW. REMOVE UPON COMPLETION OF WORK.  <div style="display: flex; justify-content: space-around;"> <div style="text-align: center;">                       W20-1                      48" X 48"                      PLACED 500' IN ADVANCE OF FLAGGER.                 </div> <div style="text-align: center;">                       W20-7 A                      48" X 48"                      PLACED 250' IN ADVANCE OF FLAGGER.                 </div> </div>
	2	 W7-3aP 24" X 18"	#2 SIGN ONLY USED WHEN CONSTRUCTION LIMITS ARE 2 OR MORE MILES IN LENGTH. ROUND UP TO NEXT WHOLE NUMBER. (NO FRACTIONAL OR DECIMAL NUMBERS)	
	3	 SP 13107 48" X 48"	- PLACE INITIALLY AT THE CONSTRUCTION LIMITS AND SPACE 1 MILE APART THEREAFTER. - AT TEE INTERSECTIONS INSTALL INITIALLY 1/2 MILE FROM INTERSECTION AND SPACE 1 MILE APART THEREAFTER.	
	4	 SP 13106 48" X 48"	- THESE ARE FOR -Y- LINES THAT ARE "THROUGH" ROADWAYS. - DEAD END AND SUBDIVISION ROADS ARE NOT "THROUGH" ROADWAYS. - INSTALL 500' +/- FROM EACH -Y- LINE APPROACH AS SHOWN ABOVE. - FOR MULTIPLE -Y- LINES THAT ARE SEPARATED BY 0.25 MILES OR LESS, TREAT AS A SINGLE UNIT AND INSTALL WITHIN 500' OF EACH APPROACH. - A MAXIMUM OF 2 SIGN SETS PER MILE. DO NOT INSTALL WHEN -Y- LINES ARE WITHIN 0.5 MILES FROM "END ROAD WORK" SIGN. - FOR TEE INTERSECTIONS, INSTALL WITHIN 500' +/- OF THE INTERSECTION ALONG -L- LINE.	
	5	 G20-2 A 48" X 24"	PLACE 500' FOLLOWING THE END OF CONSTRUCTION LIMITS OR AS SHOWN WHEN WORK ENDS AT A 3-WAY TEE INTERSECTION.	

THE ABOVE SIGNS ARE ALL THAT ARE REQUIRED FOR A CONTRACTOR TO BEGIN A RESURFACING CONTRACT. ANY ADDITIONAL SIGNS REQUESTED BY NCDOT DIVISIONS SHALL BE INSTALLED WITHIN 7 BUSINESS DAYS OF THE START OF CONTRACT WORK.

**MAPS LESS THAN 2 MILES**

FOR RESURFACING MAPS WITH CONSTRUCTION LIMITS LESS THAN 2 MILES IN LENGTH, NO STATIONARY SIGNS ARE REQUIRED. USE PORTABLE "ROAD UNDER CONSTRUCTION" OR "ROAD WORK AHEAD" SIGNS IN LIEU OF STATIONARY ADVANCE WARNINGS SIGNS.



**ADVANCE WARNING SIGNS FOR RURAL AND SUBURBAN 2-LANE ROADWAY RESURFACING**